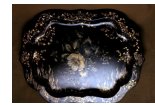


Japanware Catalogue with Japanese Photographs

Have a look at the small catalogue of objects below and compare their decoration with Japanese decoration, from which they drew their influence.



Chinoiserie chafing dish.



Chinoiserie chafing dish.
Early 18th Century.
Torfaen Museum Trust.

This chafing dish was an early plate or food warmer! The plates or food would have been put in the top, and hot coals would have been placed in the pull out draw at the bottom to keep it warm. This chafing dish is decorated in a Chinese style which went out of fashion, as more flowers and fruit decoration replaced it.



Argyll Pot



Argyll.
Pontypool, late 18th century.
Japanned tinplate. Torfaen
Museum Trust.

An Argyll Pot is a gravy pot. The difference between a tea pot and an Argyll is that the Argyll has a sieve inside it, to hold the lumps back while a tea pot pours the liquid and leaves through a sieve that is held above the cup.



Waiter



Waiter.
Pontypool, late 18th century.
Japanned tinplate.

A waiter is a tray that waiters use to carry drinks on. This one is decorated with a perforated border and unusual bird pattern.



Bookend



Bookend.
USK, 19th Century. Japanned
Tinplate.
Torfaen Museum Trust.

This is one of a pair of Japanware bookends. It is decorated with gilt tracery. Bookends are heavy ornaments that stop books on shelves falling down.



Candlesticks



Pair of Candlesticks.
Late 18th Century
Japanned Tinplate.
Torfaen Museum Trust.

This pair of Candlesticks were a part of Glantorfaen House on Commercial Street. Greenaway, the solicitor who built Glantorfaen House collected Japanware, so it is likely that these are early examples. They are now part of the Glantorfaen dining room exhibition in Pontypool Museum.



Tea Caddy

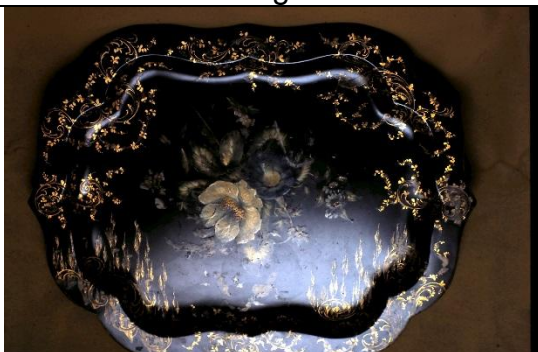


Tea Caddy.
Late 18th Century.
Japanned Tinplate.
Torfaen Museum Trust.

A Tea Caddy is a box that holds tea leaves. These are loose leaf particles that are stewed and then poured through a strainer. This box was once a part of Glantorfaen House.



Dining Set



Dining Set.
Birmingham .c. 1830 – 50
Birmingham.

This is one of three trays, which included a bread tray. They were made by Jennings and Butteridge of Birmingham.

